

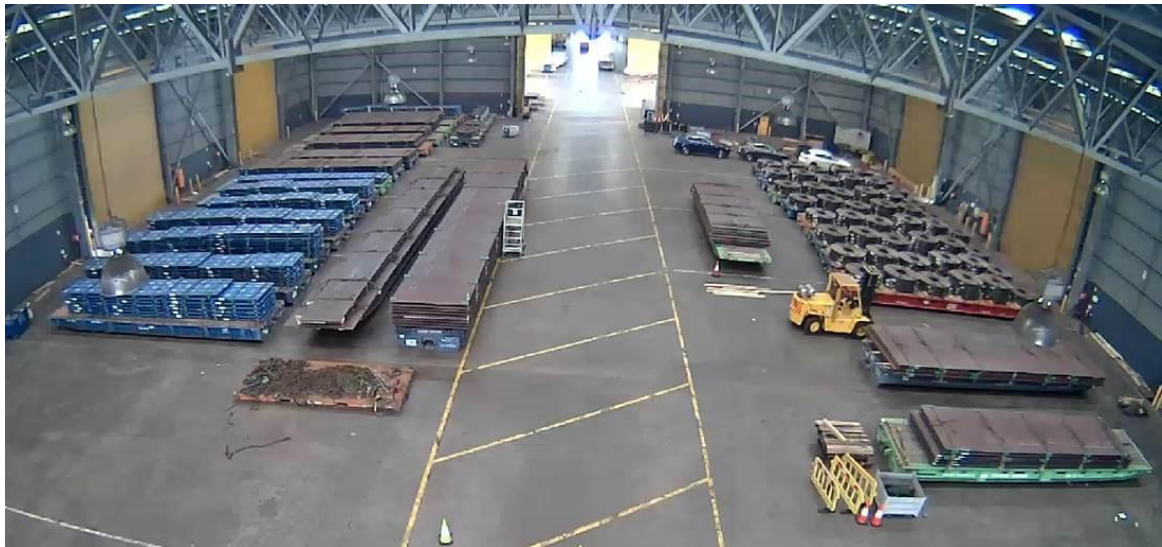
News Update

March, 2018

BlueScope forecast shipping volumes to increase to over 70,000t through AAT

AAT terminal user BlueScope previously shipped approximately 20,000t of steel product through AAT's Port Kembla terminal, predominantly to New Zealand. Over the last 18 months, volumes have significantly increased and are expected to exceed 70,000T per annum.

The growth is attributed to an increase in domestic shipments to WA, an expanded product range and the utilisation of different shipping methods all of which leverage AAT's expertise and flexible terminal and support services.



BlueScope steel in undercover storage at AAT Port Kembla

